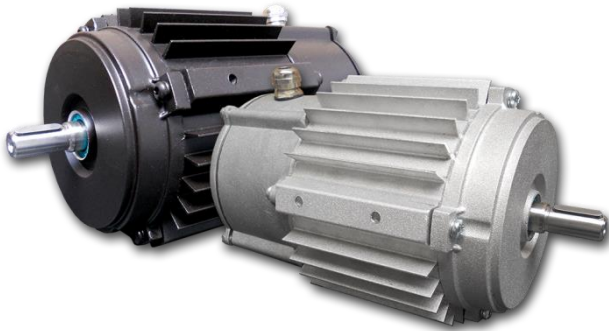


## ONE-PHASE MOTORS FOR AXIAL FANS Series SWK110



### General technical data:

- Single phases induction motors
- Frame size 71
- Rated voltage 230V / 50Hz
- Full temperature protection:  
bimetallic sensor in stand Winding
- Duty S1 (continuous work)
- Insulation class F
- Degree of protection IP66
- Work in moderate climate conditions  
(ambient temperature from -15°C to +40°C)
- Aluminium frame
- Motors meet requirements of EN 60034-1
- CE certificate

### 2-poles Motors (3000 rpm)

Type	Rated Output P <sub>2</sub> [kW]	Rated speed ω [min <sup>-1</sup> ]	Rated current at 230 V I <sub>N</sub> [A]	Rel. pull-in current I <sub>R</sub> /I <sub>N</sub>	Rated torque M <sub>N</sub> [Nm]	Rel. starting torque M <sub>R</sub> /M <sub>N</sub>	Capacitor C [μF]	Power factor cos φ	Efficiency η [%]
SWK110/40-2	0,25	2740	1,65	2,59	0,87	0,51	8	0,99	64
SWK110/50-2	0,37	2840	2,46	3,62	1,24	0,43	12	0,98	66
SWK110/60-2	0,55	2840	3,60	3,38	1,85	0,36	14	0,99	69
SWK110/80-2	0,75	2840	4,50	3,74	2,52	0,39	20	0,99	74

### 4-poles Motors (1500 rpm)

Type	Rated Output P <sub>2</sub> [kW]	Rated speed ω [min <sup>-1</sup> ]	Rated current at 230 V I <sub>N</sub> [A]	Rel. pull-in current I <sub>R</sub> /I <sub>N</sub>	Rated torque M <sub>N</sub> [Nm]	Rel. starting torque M <sub>R</sub> /M <sub>N</sub>	Capacitor C [μF]	Power factor cos φ	Efficiency η [%]
SWK110/35-4	0,12	1380	1,10	1,58	0,82	0,93	8	0,97	50
SWK110/40-4	0,15	1370	1,30	1,40	1,04	0,90	8	0,95	53
SWK110/40-4	0,18	1370	1,30	1,82	1,25	0,53	8	0,99	59
SWK110/50-4	0,25	1380	2,10	2,44	1,73	0,40	10	0,89	60
SWK110/60-4	0,37	1370	2,60	2,00	2,58	0,50	14	0,98	65
SWK110/80-4	0,55	1360	3,80	2,13	3,86	0,38	14	0,92	69
SWK110/100-4	0,75	1375	4,70	2,59	5,20	0,25	16	0,94	76

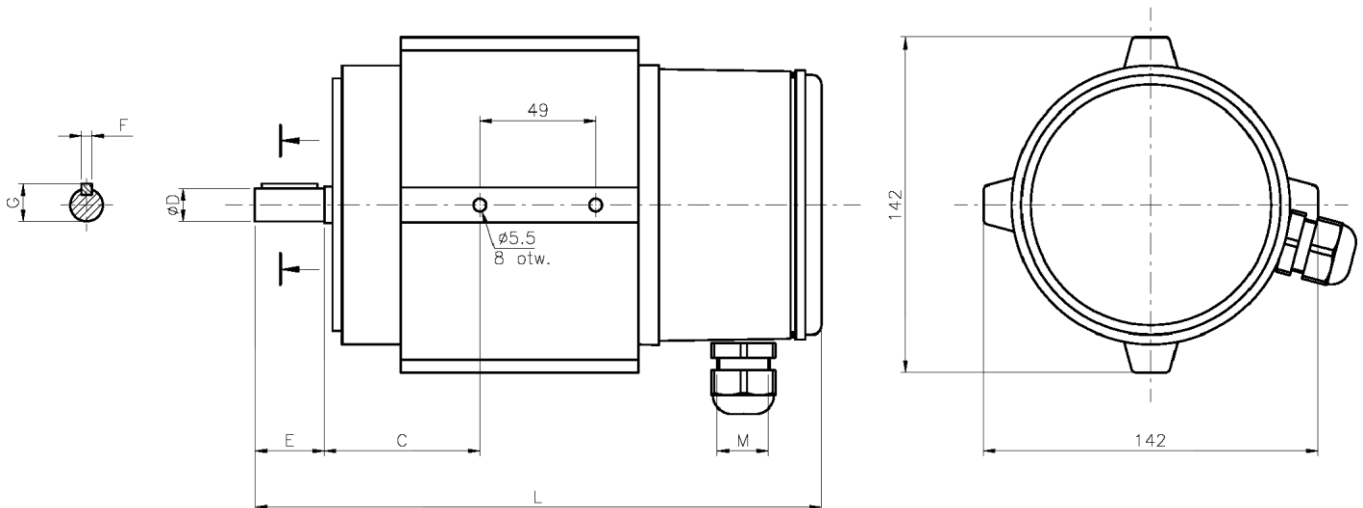
Due to the continuous development of the product, the manufacturer reserves the right to introduce changes and modifications to the technical data without prior notice



### 6-poles Motors (1000 rpm)

Type	Rated Output P <sub>2</sub> [kW]	Rated speed ω [min <sup>-1</sup> ]	Rated current at 230 V I <sub>N</sub> [A]	Rel. pull-in current I <sub>R</sub> /I <sub>N</sub>	Rated torque M <sub>N</sub> [Nm]	Rel. starting torque M <sub>R</sub> /M <sub>N</sub>	Capacitor C [μF]	Power factor cos φ	Efficiency η [%]
SWK110/35-6	0,09	890	0,73	1,34	0,97	0,71	5	0,99	51
SWK110/40-6	0,12	900	0,95	1,73	1,27	0,60	6	0,99	56
SWK110/50-6	0,18	890	1,41	1,84	1,93	0,46	8	0,95	58
SWK110/60-6	0,25	890	1,90	1,79	2,68	0,54	10	0,96	59
SWK110/80-6	0,37	900	2,77	2,00	3,93	0,57	14	0,95	60

### Dimensional drawing SWK110



### Dimension table

Type	Symbol	C	ØDk7	E	Fh9	G	M	L	Bearing
SWK110/35-X	50	12	25	4	13,5	M16	215	6004 ZZ C3 (front) 6203 ZZ C3 (back)	
		14	30	5	15,8		220		
SWK110/40-X	12	25	4	13,5	215				
	14	30	5	15,8	220				
SWK110/50-X	66	12	25	4	13,5		235		
		14	30	5	15,8		240		
SWK110/60-X	12	25	4	13,5	235				
	14	30	5	15,8	240				
SWK110/80-X	14	30	5	15,8	260				
	19	40	6	21,5	270				
SWK110/100-X	14	30	5	15,8	280				
	19	40	6	21,5	290				

#### Remarks:

All dimensions are in mm  
X - number of motor poles

