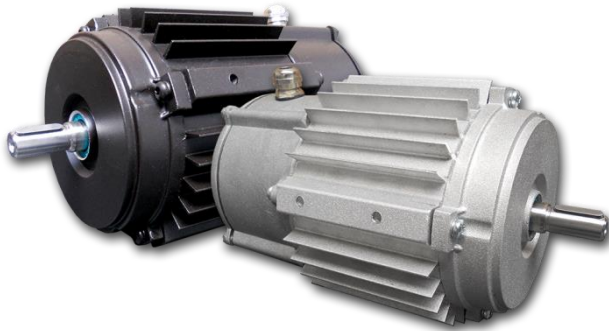


## THREE-PHASE MOTORS FOR AXIAL FANS Series STWK110



### General technical data:

- Three phases induction motors
- Frame size 71
- Rated voltage 230/400V ( $\Delta/Y$ ) / 50Hz
- Full temperature protection:  
bimetallic sensor in stand Winding
- Duty S1 (continuous work)
- Insulation class F
- Degree of protection IP66
- Work in moderate climate conditions  
(ambient temperature from -15°C to +40°C)
- Aluminium frame
- Motors meet requirements of EN 60034-1
- CE certificate

### 2-poles Motors (3000 rpm)

Type	Rated Output $P_2$ [kW]	Rated speed $\omega$ [min <sup>-1</sup> ]	Rated current at $I_N$ [A]		Rel. pull-in current $I_R/I_N$	Rated torque $M_N$ [Nm]	Rel. starting torque $M_R/M_N$	Efficiency $\eta$ [%]
			230 V $\Delta$	400 V $Y$				
STWK110/40-2	0,25	2770	1,47	0,85	4,28	0,86	4,31	61
STWK110/50-2	0,37	2830	1,82	1,05	5,71	1,25	3,73	70
STWK110/60-2	0,55	2840	2,42	1,40	5,87	1,85	3,90	77
STWK110/80-2	0,75	2790	2,94	1,70	5,24	2,57	3,11	81 <sup>(3)</sup>

<sup>(3)</sup> efficiency class IE3

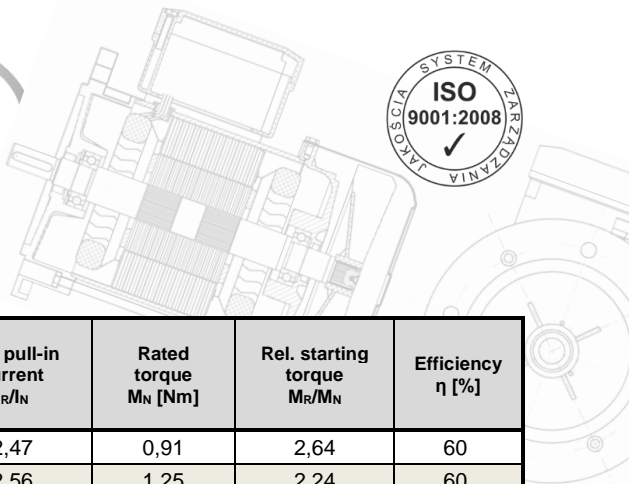
### 4-poles Motors (1500 rpm)

Type	Rated Output $P_2$ [kW]	Rated speed $\omega$ [min <sup>-1</sup> ]	Rated current at $I_N$ [A]		Rel. pull-in current $I_R/I_N$	Rated torque $M_N$ [Nm]	Rel. starting torque $M_R/M_N$	Efficiency $\eta$ [%]
			230 V $\Delta$	400 V $Y$				
STWK110/35-4	0,12	1410	1,13	0,65	2,77	0,81	2,77	57
STWK110/40-4	0,18	1410	1,47	0,85	3,56	1,22	3,28	58
STWK110/40-4	0,20	1400	1,56	0,90	3,37	1,36	2,94	58
STWK110/50-4	0,25	1390	1,56	0,90	3,33	1,72	2,50	65
STWK110/60-4	0,37	1360	2,08	1,20	3,00	2,60	2,01	73
STWK110/80-4	0,55	1380	2,77	1,60	3,94	3,80	2,65	78
STWK110/100-4	0,75	1400	3,81	2,20	4,40	5,10	2,78	80 <sup>(2)</sup>

<sup>(2)</sup> efficiency class IE2

Due to the continuous development of the product, the manufacturer reserves the right to introduce changes and modifications to the technical data without prior notice

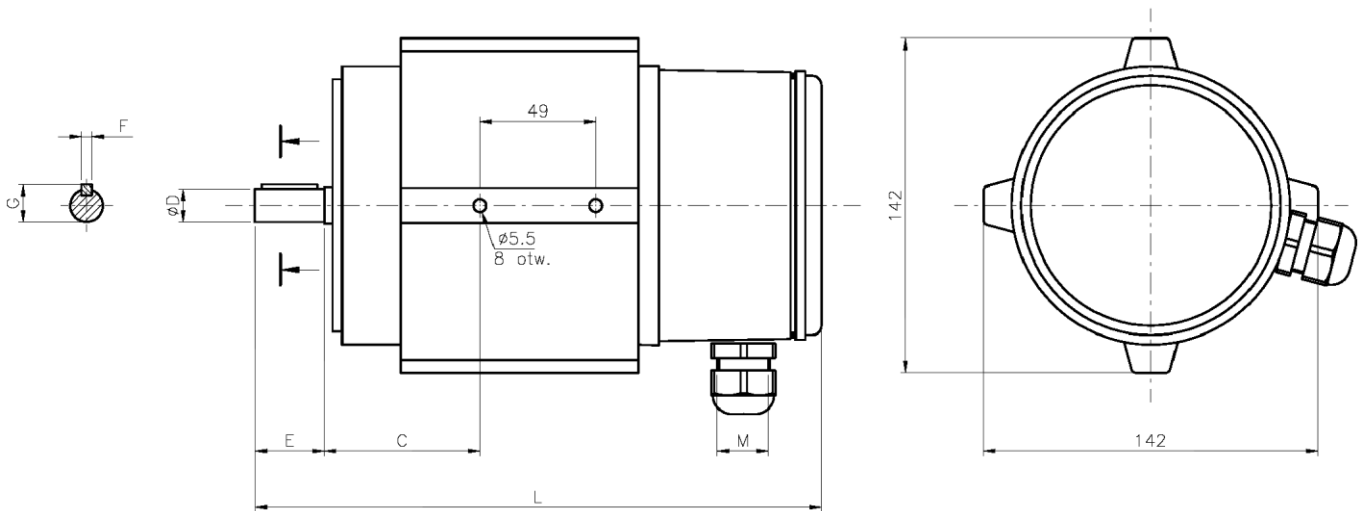




**6-poles Motors (1000 rpm)**

Type	Rated Output P <sub>2</sub> [kW]	Rated speed ω [min <sup>-1</sup> ]	Rated current at I <sub>N</sub> [A]		Rel. pull-in current I <sub>R</sub> /I <sub>N</sub>	Rated torque M <sub>N</sub> [Nm]	Rel. starting torque M <sub>R</sub> /M <sub>N</sub>	Efficiency η [%]
			230 V Δ	400 V Y				
STWK110/35-6	0,09	940	0,85	0,49	2,47	0,91	2,64	60
STWK110/40-6	0,12	920	0,95	0,55	2,56	1,25	2,24	60
STWK110/50-6	0,18	890	1,56	0,90	2,78	1,93	2,61	58
STWK110/60-6	0,25	860	1,82	1,05	2,81	2,78	2,42	59
STWK110/80-6	0,37	910	2,22	1,28	2,87	3,33	2,22	68

**Dimensional drawing  
STWK110**



**Dimension table**

Type	Symbol	C	ØDk7	E	Fh9	G	M	L	Bearings		
STWK110/35-X	50	50	12	25	4	13,5	M20	215	6004 2Z C3 (front)		
			14	30	5	15,8		220			
STWK110/40-X	50	50	12	25	4	13,5		215		6203 ZZ C3 (back)	
			14	30	5	15,8		220			
STWK110/50-X	66	66	12	25	4	13,5		235			235
			14	30	5	15,8		240			
STWK110/60-X	66	66	12	25	4	13,5		235	240		
			14	30	5	15,8		240			
STWK110/80-X	66	66	14	30	5	15,8		260	270		
			19	40	6	21,5		270			
STWK110/100-X	66	66	14	30	5	15,8		280	290		
			19	40	6	21,5		290			

**Remarks:**

All dimensions are in mm  
X - number of motor poles

