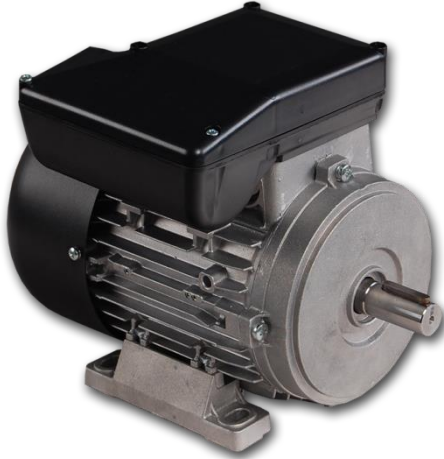


ONE-PHASE MOTORS FOR GENERAL PURPOSE Series SEg90 / SEMg90



General technical date:

- Single phases induction motors
- Frame size 90
- Rated voltage 230V / 50Hz
- Full temperature protection:
bimetallic sensor in stand Winding
- Duty S1 (continuous work)
- Insulation class F
- Degree of protection IP54 (to IP55 on request)
- Work in moderate climate conditions
(ambient temperature from -15°C to +40°C)
- Aluminium frame
- Motors meet requirements of EN 60034-1
- CE certificate

2-poles Motors (3000 rpm) and 4-poles (1500 rpm) with standard starting torque

Type	Rated Output P ₂ [kW]	Rated speed ω [min ⁻¹]	Rated current at 230 V I _N [A]	Rel. pull-in current I _R /I _N	Rated torque M _N [Nm]	Rel. starting torque M _R /M _N	Capacitor C [μF]	Power factor cos φ	Efficiency η [%]
SEg90-2S	1,5	2780	8,30	3,03	5,15	0,44	35	0,99	80
SEg90-2L	2,0	2860	11,50	4,09	6,68	0,45	50	0,98	79
SEg90-4S	1,1	1360	6,70	2,58	7,72	0,38	40	0,98	73
SEg90-4L	1,5	1390	8,30	2,51	10,3	0,36	50	0,99	81

2-poles Motors (3000 rpm) and 4-poles (1500 rpm) with increased starting torque

Type	Rated Output P ₂ [kW]	Rated speed ω [min ⁻¹]	Rated current at 230 V I _N [A]	Rel. pull-in current I _R /I _N	Rated torque M _N [Nm]	Rel. starting torque M _R /M _N	Capacitor C [μF]	Power factor cos φ	Efficiency η [%]
SEMg90-2S	1,1	2720	6,60	2,83	3,86	0,67	30	0,97	76
SEMg90-2L	1,5	2820	10,00	4,10	5,08	0,71	50	0,98	67
SEMg90-4S	0,75	1350	5,10	2,35	5,31	0,77	40	0,98	65
SEMg90-4L	1,1	1360	6,50	2,71	7,72	0,63	40	0,99	74

Due to the continuous development of the product, the manufacturer reserves the right to introduce changes and modifications to the technical data without prior notice

Greater Poland Electric Motors Factory MEBLOMARK

tel. +48 62 587 04 00, fax +48 62 587 04 09

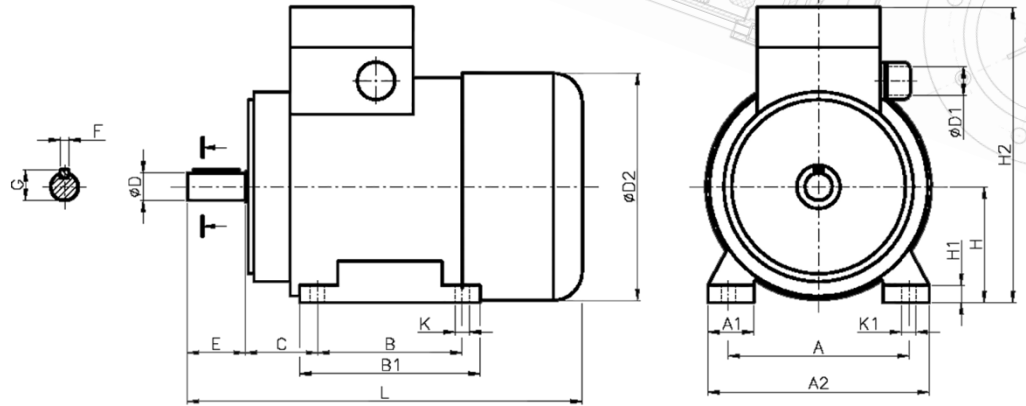
Headquarters
P.P.H.U. MEBLOMARK Zygmunt Daszczyk
Powstańców Wlkp. 15a
63-500 Ostrzeszów, POLAND

NIP 622-010-95-93 REGON 250495692 ISO9001:2008
www.meblo.com.pl
office@meblo.com.pl
Edition 2015/01



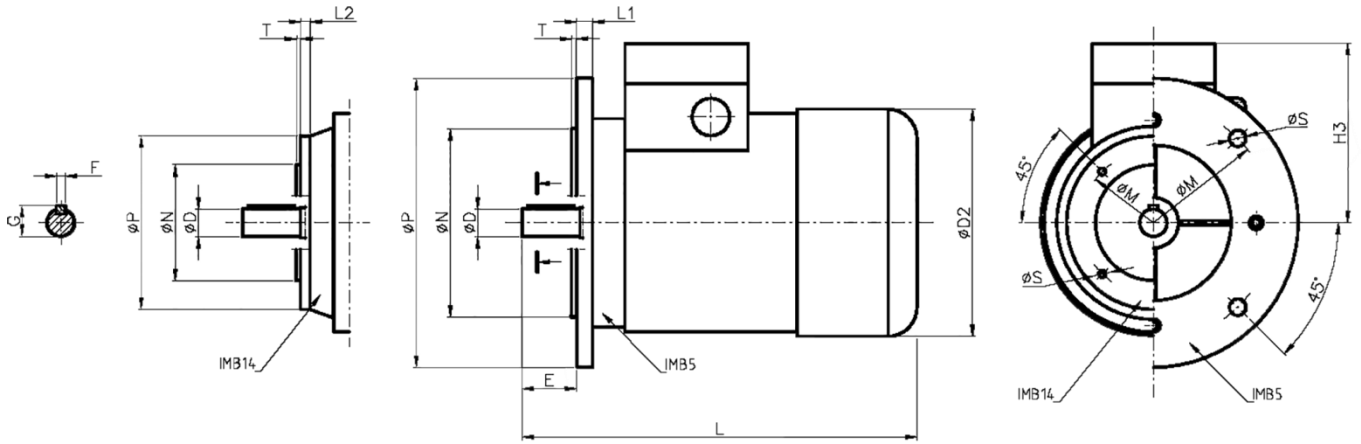


**Dimensional drawing – feet mounting SEg90 / SEMg90
IMB3**



Type of construction	Dimensions [mm]																		
	A	A1	A2	B	B1	C	ØD	ØD1	ØD2	E	F	G	H	H1	H2	K	K1	L	Bearing
SE(M)g90-S IMB3	140	43	176	100	130	56	24j6	M20	179	50	8h9	27	90	15	224	10	17	305	6205
SE(M)g90-L IMB3				125	155													330	

**Dimensional drawing – flange mounting SEKg90 / SEMKg90
IMB5, IMB14/1, IMB14/2**



Type of construction	Dimensions [mm]															
	ØD	ØD1	ØD2	E	F	G	H3	L	L1	L2	ØM	ØN	ØP	ØS	T	Bearing
SE(M)Kg90-S IMB5	24j6	M20	179	50	8h9	27	134	305	10,5	-	165	130j6	200	12	3,5	6205
SE(M)Kg90-L IMB5								330								
SE(M)Kg90-S IMB14/1								305	-	9,5	130	110j6	160	M8		
SE(M)Kg90-L IMB14/1								330								
SE(M)g90-S IMB14/2								305	-	14,5	115	95j6	140	M8	3	
SE(M)g90-L IMB14/2								330								