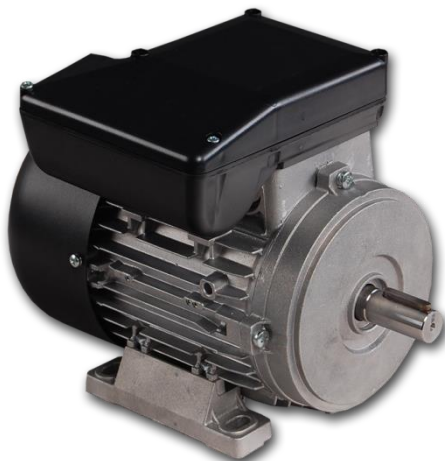


## ONE-PHASE MOTORS FOR GENERAL PURPOSE Series SEg80 / SEMg80



### General technical date:

- Single phases induction motors
- Frame size 80
- Rated voltage 230V / 50Hz
- Full temperature protection:  
bimetallic sensor in stand Winding
- Duty S1 (continuous work)
- Insulation class F
- Degree of protection IP54 (to IP55 on request)
- Work in moderate climate conditions  
(ambient temperature from -15°C to +40°C)
- Aluminium frame
- Motors meet requirements of EN 60034-1
- CE certificate

### 2-poles Motors (3000 rpm) and 4-poles (1500 rpm) with standard starting torque

Type	Rated Output P <sub>2</sub> [kW]	Rated speed ω [min <sup>-1</sup> ]	Rated current at 230 V I <sub>N</sub> [A]	Rel. pull-in current I <sub>R</sub> /I <sub>N</sub>	Rated torque M <sub>N</sub> [Nm]	Rel. starting torque M <sub>R</sub> /M <sub>N</sub>	Capacitor C [μF]	Power factor cos φ	Efficiency η [%]
SEg80-2A	0,75	2770	4,60	3,12	2,59	0,42	16	0,98	74
SEg80-2B	1,1	2770	6,80	2,63	3,79	0,43	25	0,99	71
SEg80-2C	1,5	2810	9,00	3,08	5,10	0,48	40	0,99	74
SEg80-2D	2,0	2750	12,50	2,80	6,95	0,36	50	0,99	72
SEg80-4A	0,55	1380	3,80	2,56	3,80	0,43	16	0,96	66
SEg80-4B	0,75	1365	4,90	2,45	5,25	0,41	20	0,92	74
SEg80-4C	1,1	1360	7,40	2,51	7,72	0,43	30	0,91	72
SEg80-4D	1,3	1370	8,00	2,50	9,06	0,37	35	0,95	74

### 2-poles Motors (3000 rpm) and 4-poles (1500 rpm) with increased starting torque

Type	Rated Output P <sub>2</sub> [kW]	Rated speed ω [min <sup>-1</sup> ]	Rated current at 230 V I <sub>N</sub> [A]	Rel. pull-in current I <sub>R</sub> /I <sub>N</sub>	Rated torque M <sub>N</sub> [Nm]	Rel. starting torque M <sub>R</sub> /M <sub>N</sub>	Capacitor C [μF]	Power factor cos φ	Efficiency η [%]
SEMg80-2A	0,55	2820	3,73	2,90	1,86	0,71	18	0,95	67
SEMg80-2B	0,75	2800	5,30	3,07	2,56	0,75	25	0,99	64
SEMg80-2C	1,1	2800	7,00	3,40	3,75	0,69	40	0,99	70
SEMg80-2D	1,5	2730	8,50	3,50	5,25	0,66	40	0,99	78
SEMg80-4A	0,37	1350	3,10	2,00	2,62	1,21	16	0,98	55
SEMg80-4B	0,55	1330	3,90	2,32	3,95	0,68	18	0,90	67
SEMg80-4C	0,75	1330	5,20	2,50	5,38	0,77	30	0,94	68

Due to the continuous development of the product, the manufacturer reserves the right to introduce changes and modifications to the technical data without prior notice

Greater Poland Electric Motors Factory MEBLOMARK

tel. +48 62 587 04 00, fax +48 62 587 04 09

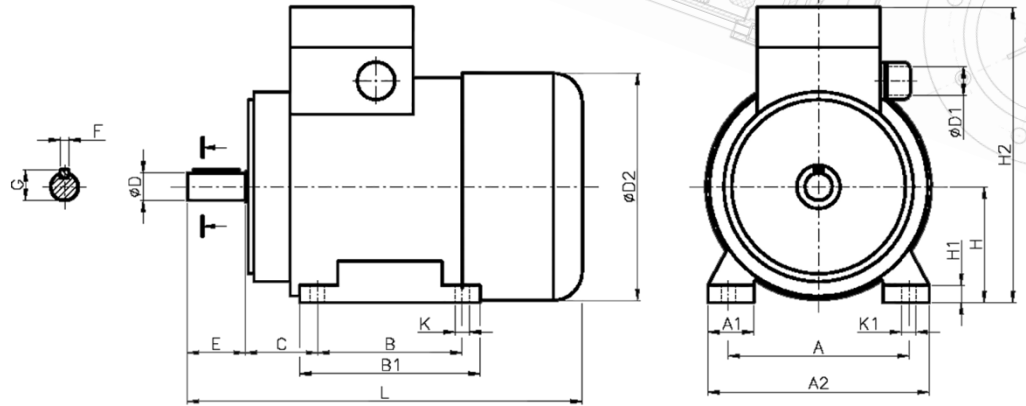
Headquarters  
P.P.H.U. MEBLOMARK Zygmunt Daszczyk  
Powstańców Wlkp. 15a  
63-500 Ostrzeszów, POLAND

NIP 622-010-95-93 REGON 250495692 ISO9001:2008  
www.meblo.com.pl  
office@meblo.com.pl  
Edition 2015/01



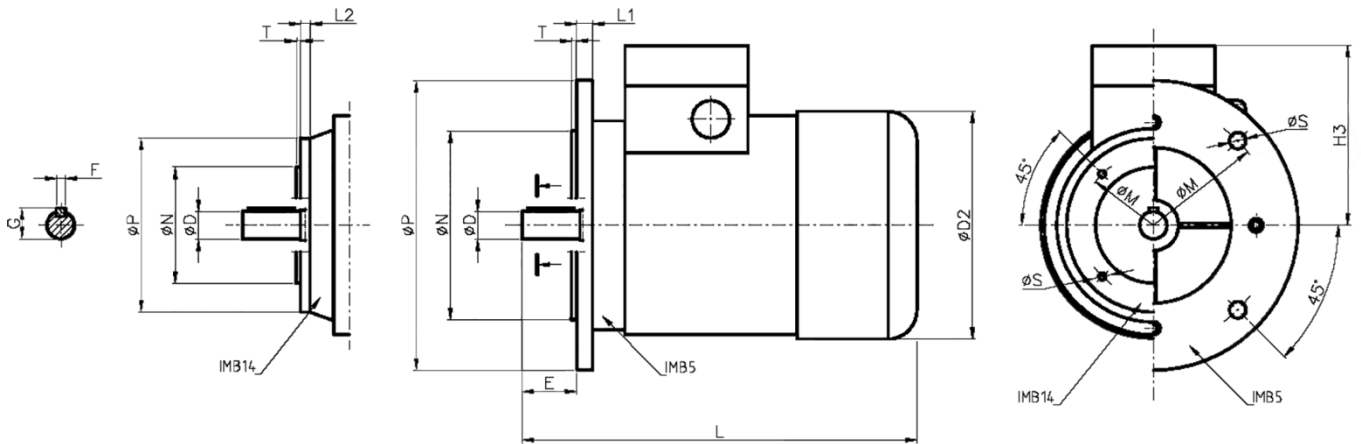


**Dimensional drawing – feet mounting SEg80 / SEMg80  
IMB3**



Type of construction	Dimensions [mm]																		
	A	A1	A2	B	B1	C	ØD	ØD1	ØD2	E	F	G	H	H1	H2	K	K1	L	Bearing
SE(M)g80 IMB3	125	33	154	100	125	50	19j6	M20	162	40	6h9	21,5	80	15	213	9	16	277	6204 ZZ

**Dimensional drawing – flange mounting SEKg80 / SEMKg80  
IMB5  
IMB14/1  
IMB14/2**



Type of construction	Dimensions [mm]															
	ØD	ØD1	ØD2	E	F	G	H3	L	L1	L2	ØM	ØN	ØP	ØS	T	Bearing
SE(M)Kg80 IMB5	19j6	M20	162	40	6h9	21,5	133	277	10	-	165	130j6	200	12	3,5	6204 ZZ
SE(M)Kg80 IMB14/1									-	9,5	130	110j6	160	M8		
SE(M)Kg80 IMB14/2									-	11	100	80j6	120	M6		