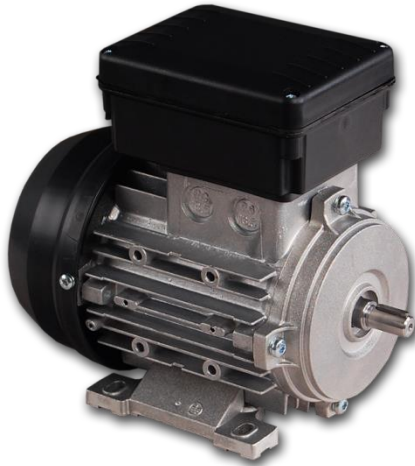


ONE-PHASE MOTORS FOR GENERAL PURPOSE Series SEg63 / SEMg63



General technical date:

- Single phases induction motors
- Frame size 63
- Rated voltage 230V / 50Hz
- Full temperature protection:
bimetallic sensor in stand Winding
- Duty S1 (continuous work)
- Insulation class F
- Degree of protection IP54 (to IP55 on request)
- Work in moderate climate conditions
(ambient temperature from -15°C to +40°C)
- Aluminium frame
- Motors meet requirements of EN 60034-1
- CE certificate

2-poles Motors (3000 rpm) and 4-poles (1500 rpm) with standard starting torque

| Type | Rated Output P ₂ [kW] | Rated speed ω [min ⁻¹] | Rated current at 230 V I _N [A] | Rel. pull-in current I _R /I _N | Rated torque M _N [Nm] | Rel. starting torque M _R /M _N | Capacitor C [μF] | Power factor cos φ | Efficiency η [%] |
|----------|----------------------------------|------------------------------------|---|---|----------------------------------|---|------------------|--------------------|------------------|
| SEg63-2A | 0,18 | 2770 | 1,42 | 2,68 | 0,62 | 0,63 | 8 | 0,99 | 55 |
| SEg63-2B | 0,25 | 2800 | 1,70 | 3,18 | 0,85 | 0,61 | 10 | 0,99 | 63 |
| SEg63-2C | 0,37 | 2750 | 2,50 | 3,00 | 1,28 | 0,54 | 12 | 0,99 | 67 |
| SEg63-4A | 0,12 | 1390 | 1,15 | 2,04 | 0,82 | 0,66 | 6 | 0,92 | 60 |
| SEg63-4B | 0,18 | 1370 | 1,40 | 1,97 | 1,25 | 0,69 | 10 | 0,98 | 56 |
| SEg63-4C | 0,25 | 1370 | 2,00 | 2,10 | 1,74 | 0,62 | 10 | 0,96 | 58 |

2-poles Motors (3000 rpm) and 4-poles (1500 rpm) with increased starting torque

| Type | Rated Output P ₂ [kW] | Rated speed ω [min ⁻¹] | Rated current at 230 V I _N [A] | Rel. pull-in current I _R /I _N | Rated torque M _N [Nm] | Rel. starting torque M _R /M _N | Capacitor C [μF] | Power factor cos φ | Efficiency η [%] |
|-----------|----------------------------------|------------------------------------|---|---|----------------------------------|---|------------------|--------------------|------------------|
| SEMg63-2A | 0,12 | 2710 | 1,10 | 2,23 | 0,42 | 1,52 | 8 | 0,99 | 48 |
| SEMg63-2B | 0,18 | 2650 | 1,65 | 2,30 | 0,65 | 1,35 | 10 | 0,92 | 51 |
| SEMg63-2C | 0,25 | 2600 | 1,90 | 2,53 | 0,87 | 0,90 | 10 | 0,92 | 64 |
| SEMg63-4A | 0,09 | 1330 | 1,20 | 1,47 | 0,65 | 1,85 | 10 | 0,98 | 36 |
| SEMg63-4B | 0,12 | 1330 | 1,40 | 1,51 | 0,86 | 1,71 | 10 | 0,96 | 37 |
| SEMg63-4C | 0,15 | 1320 | 1,50 | 1,69 | 1,09 | 1,62 | 12 | 0,97 | 48 |
| SEMg63-4D | 0,18 | 1320 | 1,60 | 1,80 | 1,30 | 1,36 | 12 | 0,97 | 53 |

Due to the continuous development of the product, the manufacturer reserves the right to introduce changes and modifications to the technical data without prior notice

Greater Poland Electric Motors Factory MEBLOMARK

tel. +48 62 587 04 00, fax +48 62 587 04 09

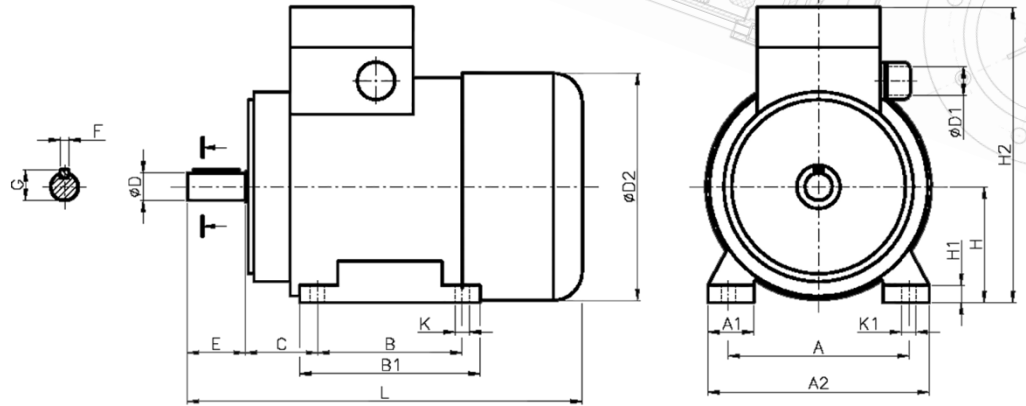
Headquarters
P.P.H.U. MEBLOMARK Zygmunt Daszczyk
Powstańców Wlkp. 15a
63-500 Ostrzeszów, POLAND

NIP 622-010-95-93 REGON 250495692 ISO9001:2008
www.meblo.com.pl
office@meblo.com.pl
Edition 2015/01



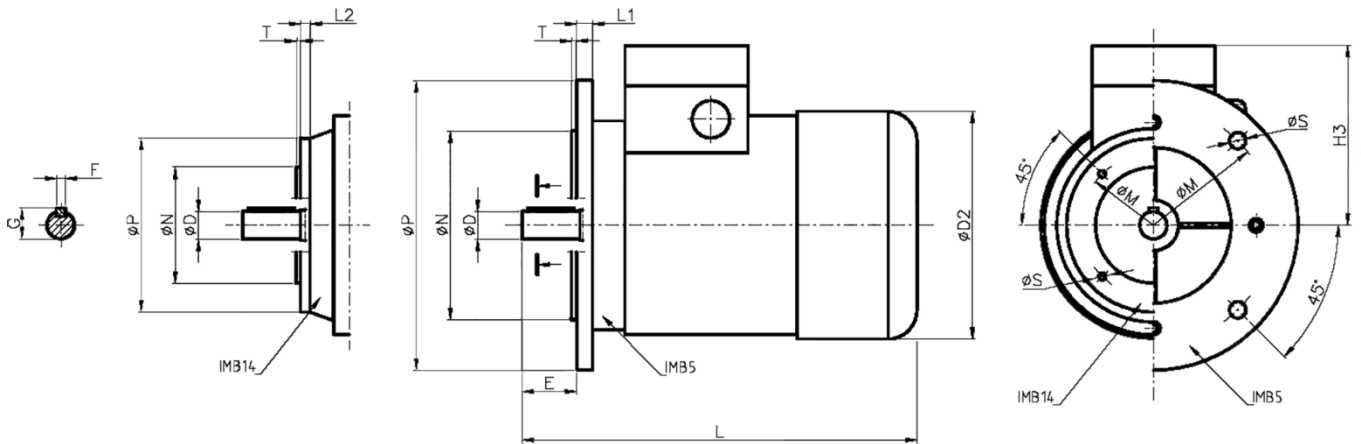


**Dimensional drawing – feet mounting SEg63 / SEMg63
IMB3**



| Type of construction | Dimensions [mm] | | | | | | | | | | | | | | | | | | |
|----------------------|-----------------|----|-----|----|-----|----|------|-----|-----|----|-----|------|----|----|-----|---|----|-----|---------|
| | A | A1 | A2 | B | B1 | C | ØD | ØD1 | ØD2 | E | F | G | H | H1 | H2 | K | K1 | L | Bearing |
| SE(M)g63 IMB3 | 100 | 23 | 120 | 80 | 105 | 40 | 11j6 | M20 | 127 | 23 | 4h9 | 12,5 | 63 | 10 | 189 | 7 | 12 | 211 | 6202 Z2 |

**Dimensional drawing – flange mounting SEKg63 / SEMKg63
IMB5
IMB14/1
IMB14/2**



| Type of construction | Dimensions [mm] | | | | | | | | | | | | | | | |
|----------------------|-----------------|-----|-----|----|-----|------|-----|-----|----|----|-----|------|-----|----|---|---------|
| | ØD | ØD1 | ØD2 | E | F | G | H3 | L | L1 | L2 | ØM | ØN | ØP | ØS | T | Bearing |
| SE(M)Kg63 IMB5 | 11j6 | M20 | 127 | 23 | 4h9 | 12,5 | 126 | 211 | 10 | - | 115 | 95j6 | 140 | 10 | 3 | 6202 Z2 |
| SE(M)Kg63 IMB14/1 | | | | | | | | | - | 8 | 100 | 80j6 | 120 | M6 | | |
| SE(M)Kg63 IMB14/2 | | | | | | | | | - | 7 | 75 | 60j6 | 90 | M5 | | |